



Squeeze-off tools



Timberline TC2



Used for routine maintenance as well as emergency squeeze-off.

Designed for top-down application, eliminating the need for costly under-the-pipe excavation.

Made of aircraft grade aluminum for high strength, corrosion resistance, and durability.

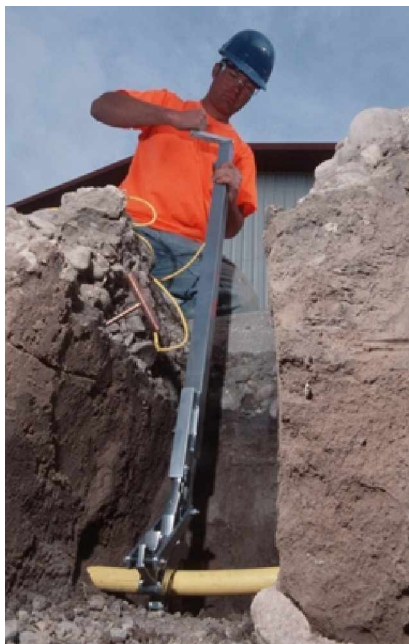
EFFECTIVE ON PIPE SIZES*

1/2" to 2 " IPS

1/2" to 2 " CTS

12.5 mm to 63 mm

Timberline TRI50



Aluminum handle keeps operator safely out of trench.

Designed for top-down application eliminating the need for costly under-the-pipe excavation.

Used for routine maintenance, as well as emergency squeeze-off.

Operates in an 18 inch (46 cm) diameter "keyhole".

EFFECTIVE ON PIPE SIZES*

1/2" to 1" IPS

1/2" to 1 1/4" CTS

12.5mm to 32mm



Squeeze-off tools



Timberline TR250



Aluminum handle keeps operator safely out of trench.

Designed for top-down application eliminating the need for costly under-the-pipe excavation.

Used for routine maintenance, as well as emergency squeeze-off.

Operates in an 18 inch (46 cm) diameter "keyhole".

Safe. Reliable. Cost Effective.

EFFECTIVE ON PIPE SIZES*

1/2" to 2 " IPS

1/2" to 2 " CTS

12.5 mm to 63 mm

Timberline TR650



Long handle keeps operator out of the trench.

Used for routine maintenance, as well as emergency squeeze-off.

Operates in an 18 inch (46 cm) diameter "keyhole".

Engineered to automatically center pipe in jaws.

Interchangeable jaw adapts tool to various pipe diameters from 3" to 6".

EFFECTIVE ON PIPE SIZES*

1/2" to 2 " IPS

1/2" to 2 " CTS

12.5 mm to 63 mm