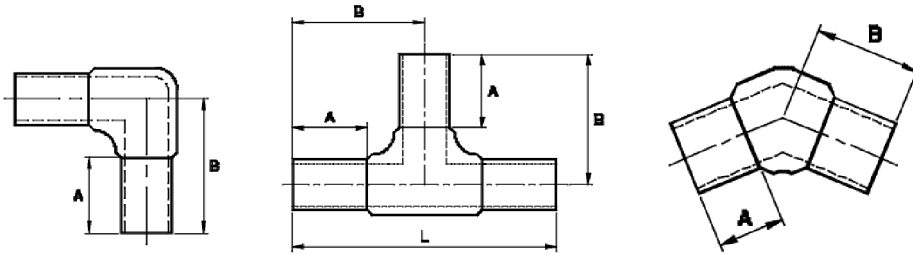




## 10" & 12" Molded Butt Fitting

Produced to ASTM D2513 and D3261



<b><u>Molded Fitting (IPS)</u></b>	<b><u>DR/Wall</u></b>	<b><u>Dimensions A x B x L</u></b>	<b><u>Package Weight (lbs)</u></b>
10" 45°	DR 11-17	6 x 13	37
10" 90°	DR 11-17	6 x 13	34
10" Tee	DR 11-17	6 x 13 x 26	50
12" 45°	DR 11-17	6 x 15.5	61
12" 90°	DR 11-17	6 x 15.5	56
12" Tee	DR 11-17	6 x 15.5 x 31	77